

847-0
CLARKE, JOHN E.
HARMON, MAXINE P. JTS.
103 STEPPING STONES LANE

SUBAREAS

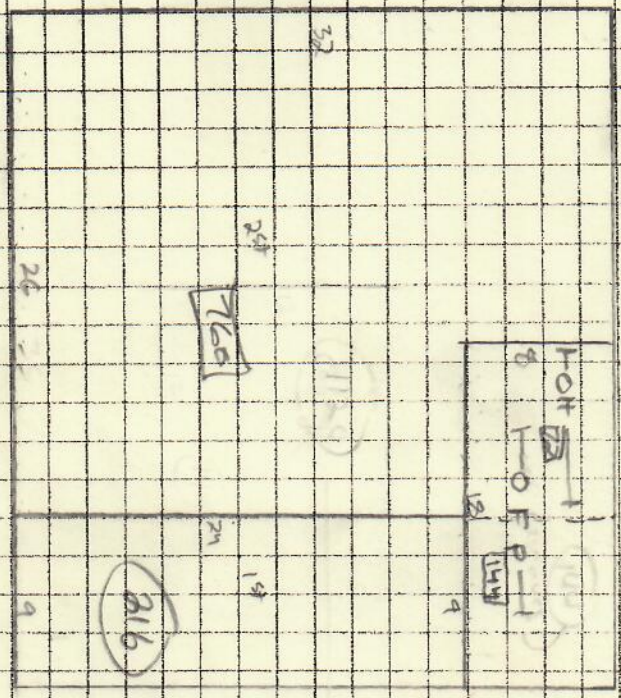
UNITS

BUILDING SKETCH

Stepping Stone Ln.

2 ST - 1120
OP - 144
1ST - 216

(-72 ON FIRST ST)



R51	1	9	9	(25K)
R91	1	28		

Building Year: 2007
Sq. Footage: 11600

